

1 Connect

a) Power



b) WiFi Antenna



c) Connect Neposmart using one of the methods below

Method 1 - No Ethernet Cable

a) Locate your router **WPS** button and press for few seconds



b) Press Camera Reset/WPS button for 5 seconds to connect

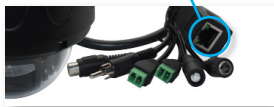


c) Restart camera by unplugging power adapter and plug back in to connect to your WiFi network

If the process fails, repeat or connect using method 2

Method 2 - With Ethernet Cable

a) Connect Ethernet cable

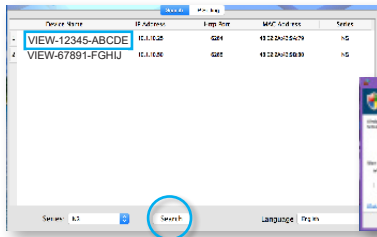


Note: Ethernet cable is required for setup only. Once you complete step 5 you can unplug the Ethernet cable from your router.

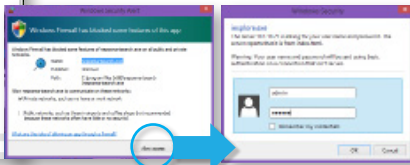
b) Connect other end to your wireless router in any of the four ports



2 Connect device, Download and Launch NeposmartSearch program from www.neposmart.com/support and Click "Search"



a) Press "Allow Access" for Windows Firewall



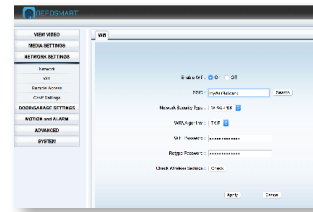
b) Double click your Neposmart Device to launch you web browser

c) When prompted, enter the default username and password *admin* and *123456*

3 Add Device to your Wireless Network



Note: If you have connected your Neposmart using the WPS method, it has already been added to your wireless network and you may skip to step 4.

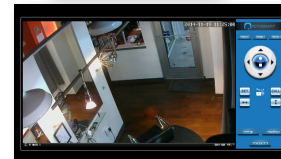


- a) From the main screen click "Settings"
- b) On the left, click "Network Settings" then "Wifi"
- c) Click "Search", choose your WiFi network and enter the password to your Wifi network. If hidden, manually enter SSID.
- d) Click "Apply" then click "Check" to test the connection.
- e) Once successful, you can unplug the Ethernet cable from your Neposmart

4 Steps needed to view the video from your browser:

Example for Internet Explorer:
(Also compatible with popular browsers such as Google Chrome, Mozilla, Firefox etc.)

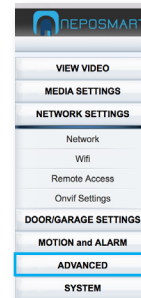
a) Clicking "View Video" prompts you to install ActiveX. Follow prompts to complete.



b) When using Internet Explorer 11+ Go to "Compatibility View" in tools, click "Add" and close. Refresh Browser.

After completing these steps you can now click "View Video" and you should be able to see the video feed of your Neposmart Camera from your browser.

5 Changing User Settings for Camera



a) Change username and password for camera (Advanced --> Users and Passwords)

